



PROMECON



T' Lift

LAPAROSCOPIC TISSUE RETRACTION SYSTEM



PROMECON

Advantages

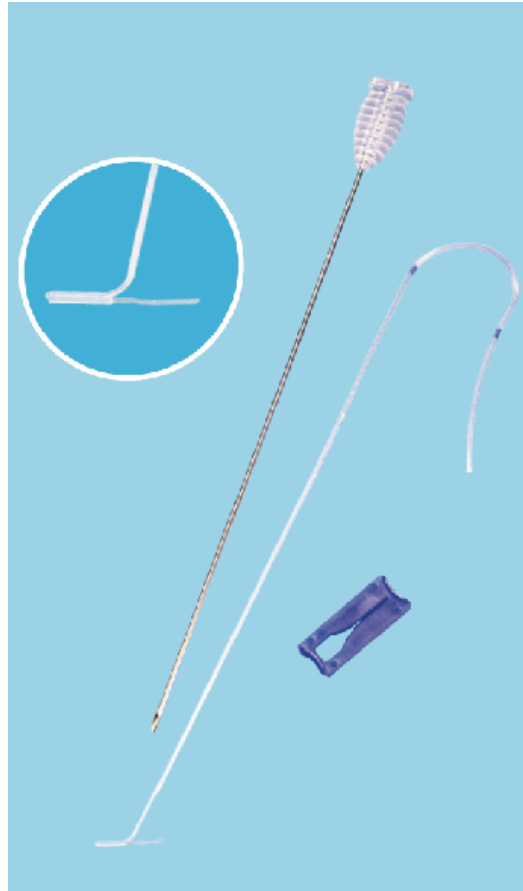
- Stable and effective retraction
- Easy handling
- Percutaneous cannula access without trocar
- Quick adjustment of the retraction height
- Allows lower Trendelenburg position
- Holds weight up to 1 kilogram





PROMECON

The T' Lift System



- Introducer
- T' Lift
- Locking clip



Needle + thread vs. T' Lift

Needle and thread

Raised risk of injury

- Organs can be damaged through inserting and removing the needles. Tip and the eye of the needles can hurt both sides of organs.
- Especially difficult when penetrating the abdominal wall of obese patients.
- Operation area can often not be visualised far enough, requiring abdominal incision.

Durable fixation not possible

- The assistant must always hold with one hand, and this situation can not be kept in long operations.
- Assistants only have one hand available.

Complicated handling

- Handling needles requires training and experience.

Time-consuming

- The application time lasts more than 2 minutes.

Cost-intensive

- Average surgery costs per minute in Germany is 30-60 Euros.
- Additionally needed: trocars, forceps.

T' Lift

Minimised risk of injury

- Since the cannula does not need to be completely pushed through the tissue to be retracted, the risk of injury is minimised.
- Penetration of the abdominal wall is easy, even for obese patients.
- Abdominal incision is rarely needed.

Durable fixation possible

- Thanks to the locking clip, T'Lift can be fixed easily and durably.
- Strain can be easily adjusted according to the operation steps.
- Assistants have both hands available.

Easy handling

- No use of forceps to hold the needles, therefore easier handling.

Time-saving

- The application time is only around 2 minutes.

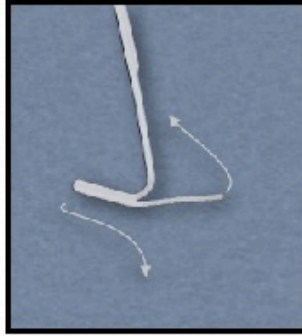
Cost-minimised

- Less time needed, thus, the duration of the surgery can be shortened.
- No additional trocars, forceps needed.



PROMECON

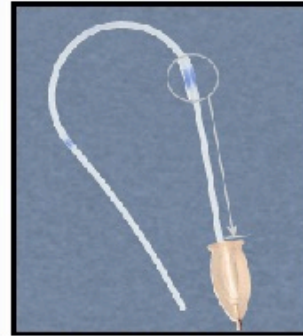
Easy handling



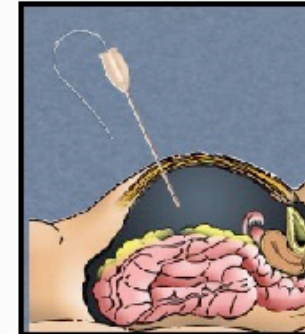
Fold the narrower arm of the T-piece upwards.



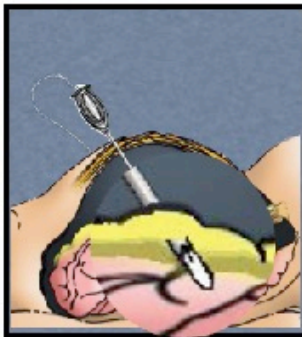
Insert the T'Lift into the introducer.



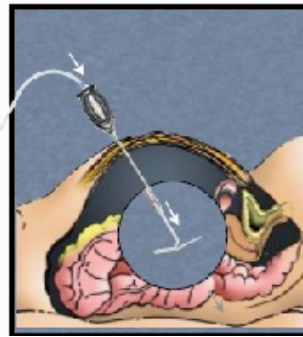
Push the T'Lift retractor slowly to the first blue marker.



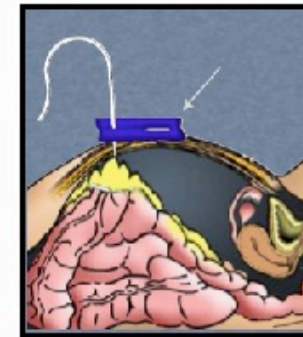
Under endoscopic surveillance, insert the introducer percutaneously through the abdominal wall into the abdominal cavity.



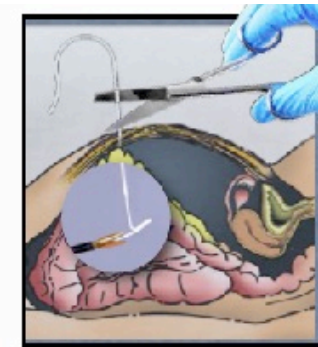
Work with the tip of the introducer through the tissue to be retracted.



Push the T'Lift retractor through the introducer cannula to the second marker to unfold the T-piece.

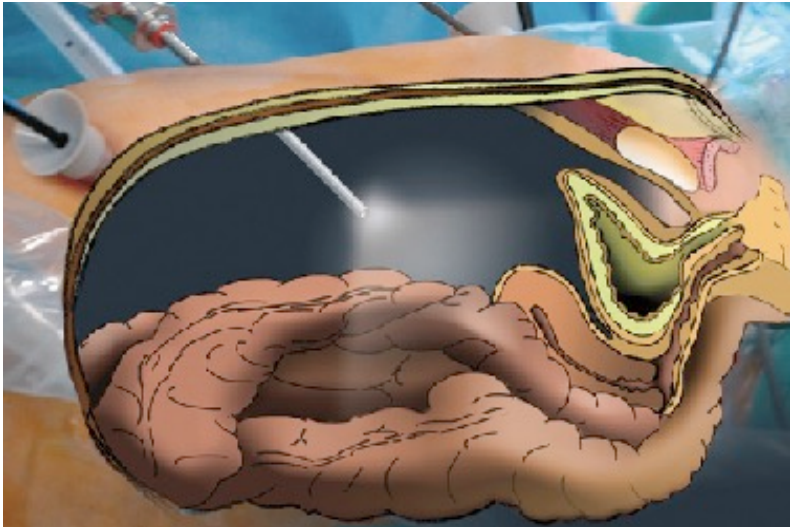


Remove the introducer cannula and pull the T'Lift retractor to the desired height. Secure it at the skin surface with a locking clip.

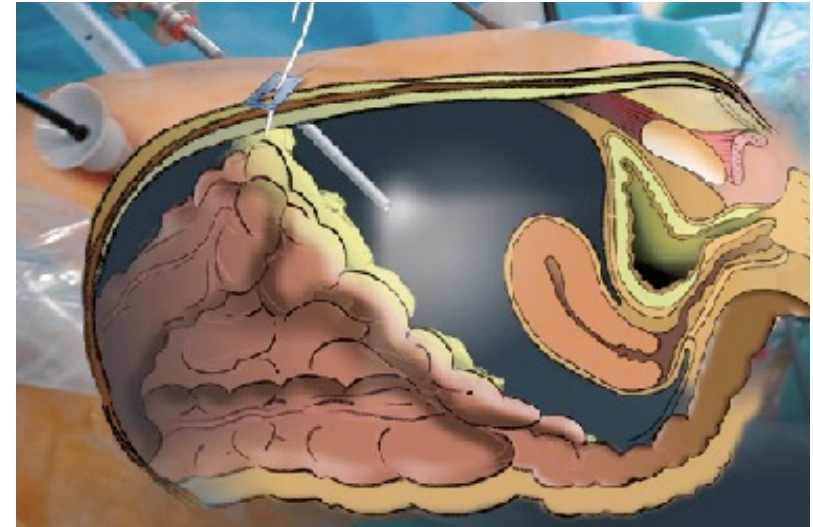


T'Lift above the skin surface. Remove the remaining T-piece with a grasping forceps.

Better view thanks to T' Lift



Without T' Lift

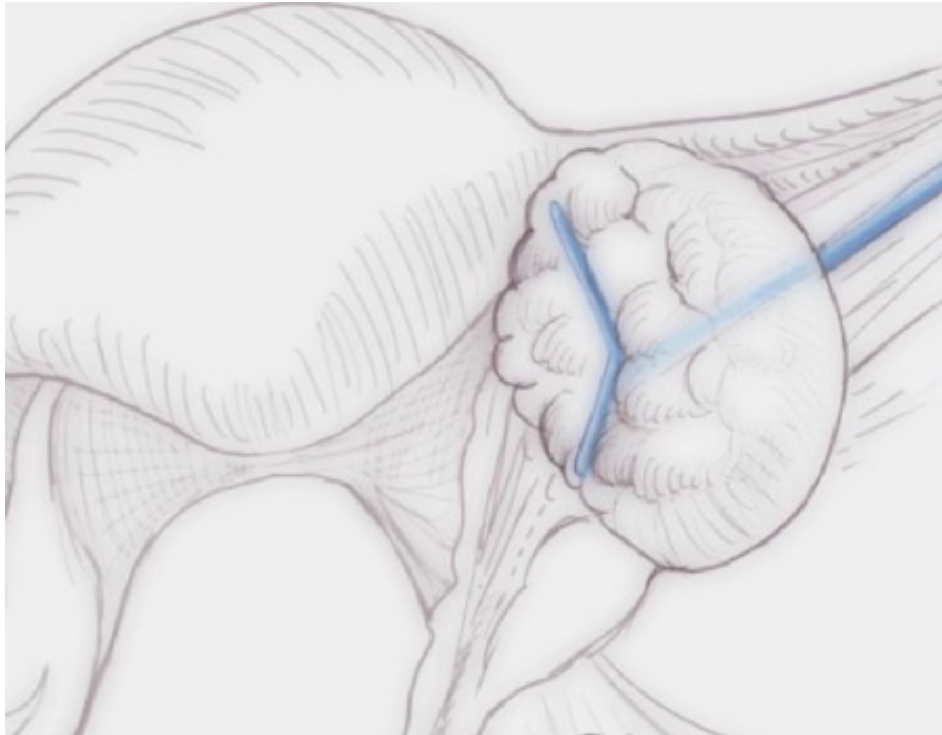


With T' Lift



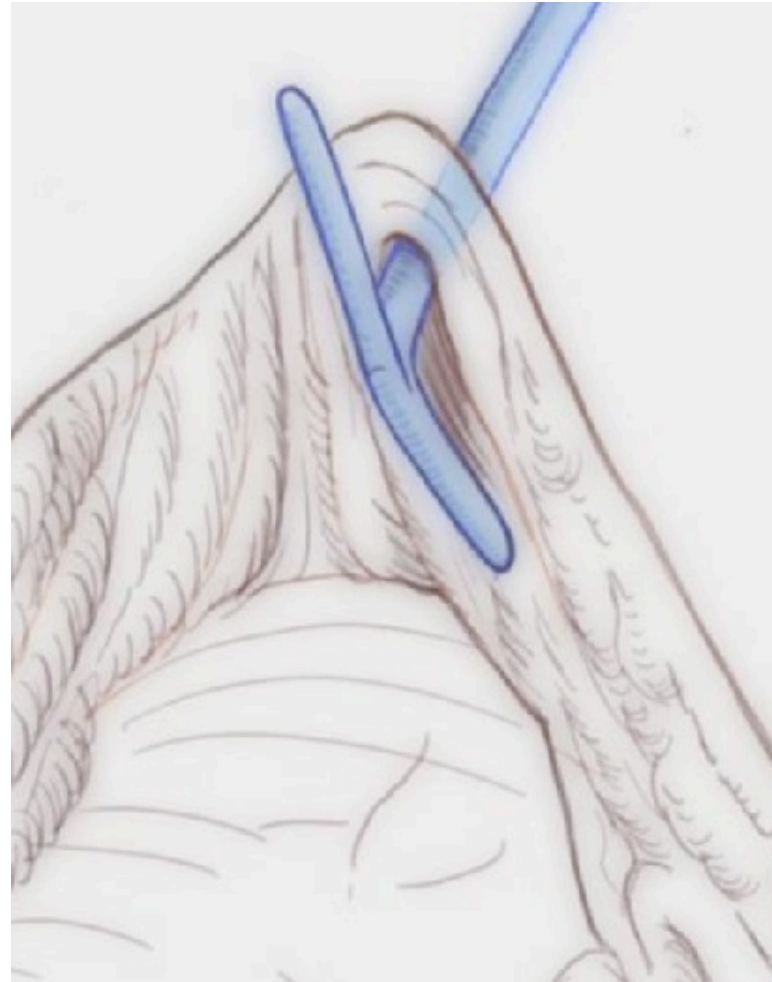
PROMECON

Handling



T-Shape:
Uterus, ovary, etc.

J-Shape:
Bladder, peritoneum, sigma, etc.





PROMECON



PROMECON GmbH
Kreuslerstraße 10
20095 Hamburg

Telefon: +49 40 36 90 16 90

Fax: +49 40 36 90 16 99

www.promecon-medical.com | info@promecon-medical.de